



*Preeminent Place to view
Scenic beauty of Nature*



FLOORPLANS



Ground Floor Plan



1st, 3rd, 5th, 7th, 9th & 11th Floor Plan

AMENITIES



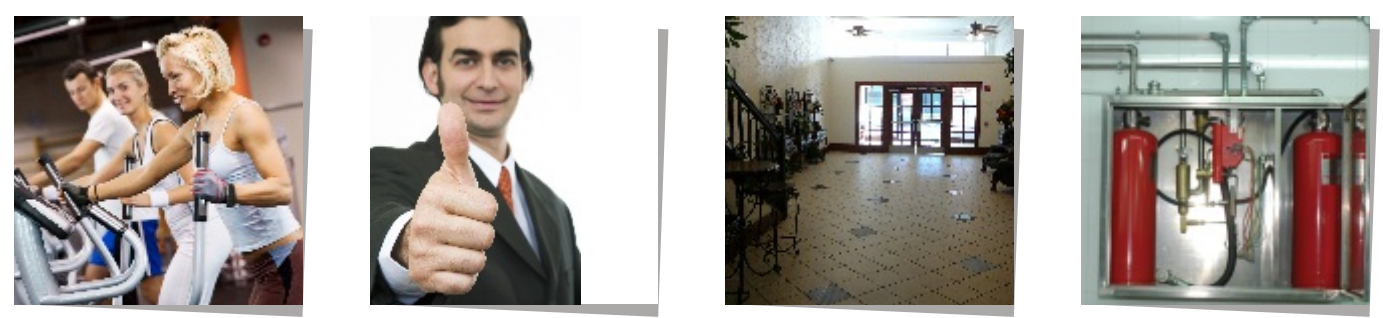
- 2' X2' Vitrified Flooring In The Entire Flat
- Granite Kitchen Platform With S. S Sink
- Designer Tiles Above Kitchen Platform Upto Lintel Level
- Designer Tiles In Bathroom
- Flush Door With Heavy Fittings
- Powder Coated Aluminium Sliding Windows
- Oil Bound Distemper On Inside Walls
- Concealed Copper Wiring With Modular Switches
- TV & Telephone Points In Hall & Master Bedroom
- Concealed Plumbing With C. P. Fittings
- Power Backup For One Lift
- Intercom Provision Facility For Each Flat



EXCLUSIVE FEATURES



- Clear Title Plot
- Project Approved By Leading Financial Institutes
- Stilt + 15 Floors
- Decorative Entrance Lobby
- Air-conditioned Gym On The 13th Floor
- Earthquake Resistant R.C.C. Design
- Fire Fighting System In The Building
- Pure Acrylic Dust Resistant Paint On External Facade Of The Building
- Compound Paving With Designer Checkered Tiles



FLOORPLANS

FLOORPLANS

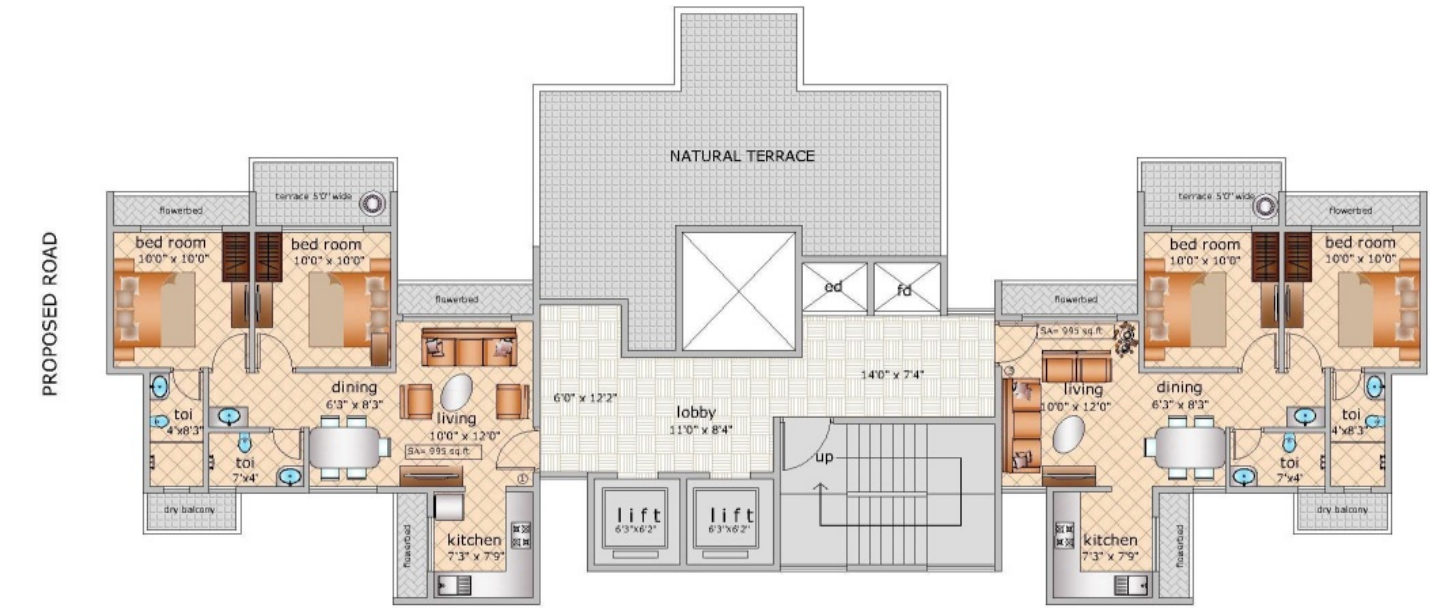
FLOORPLANS



Ground Floor Plan



2nd, 4th, 6th, 8th, 10th & 12th Floor Plan



14th Floor Plan



1st, 3rd, 5th, 7th, 9th & 11th Floor Plan



13th Floor Plan



15th Floor Plan

Our Landmark Projects



SATT BHAWAN, Koparkhairane

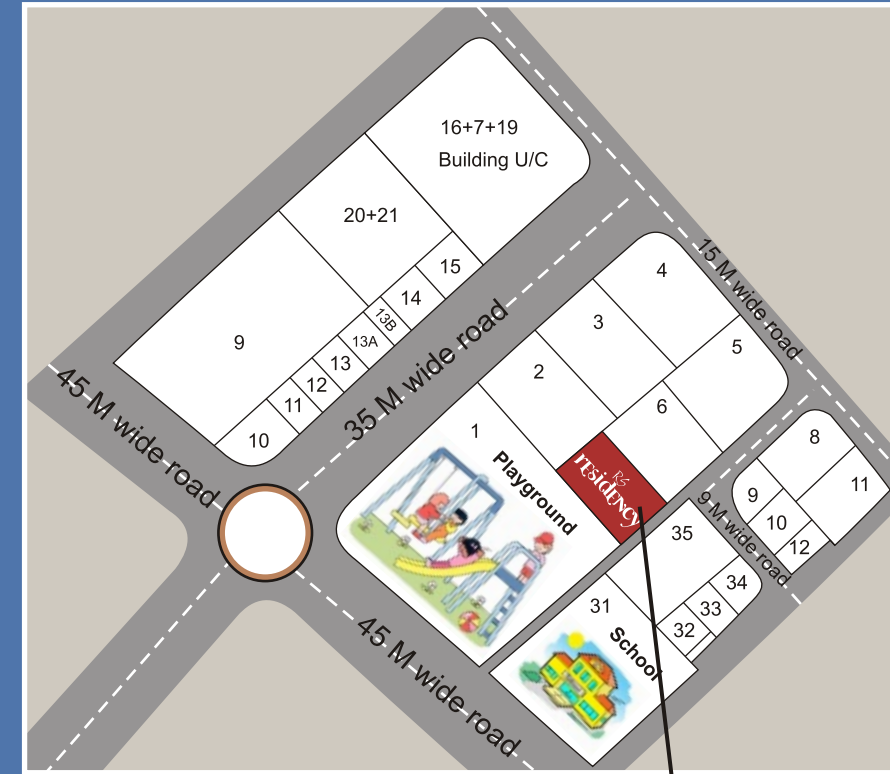


R. S. REGENCY, Koparkhairane



R. S. GRANDEUR, Koparkhairane

Location Map



Developers:

R. S. BUILDERS & DEVELOPERS

614, The Great Eastern Galleria, Plot No.20,
Sector-4, Nerul, Navi Mumbai- 400 706.

Tel: 022 - 2772 3336/ 37.

Architect:

RAJESH R. C.

Tel: 022 - 2789 2626/ 29

R. C. C. Consultants:

R. C. TIPNIS

Tel: 022 - 2568 4790

Note: All the plans, diagrams, amenities etc. are subject to the approval of respective authorities and would be changed if necessary. The discretion remains with developers.